

TeamQuest Harvest for Unisys MCP Systems



Extract Data from Multiple Systems for Collective Analysis and Reporting

TeamQuest Harvest extracts data from various systems and stores it in an enterprise database for collective analysis and reporting. This powerful capability allows you to store, analyze and report data without imposing a processing load on the system where the data was collected, which can be important in a production environment.

An enterprise database gives you the ability to efficiently analyze the performance of many heterogeneous systems together. By centralizing only key performance parameters and aggregating the data into a coarser time granularity, you can limit the network traffic and storage needed. This allows you to keep data for longer retention periods while preserving the ability to do detailed analysis on near-term fine-grain data kept locally on the systems being analyzed.

You can establish a hierarchy of performance databases to suit your needs, giving you a great deal of flexibility in analyzing performance. Performance data can be organized by operating system platform, for example, allowing performance data from all systems running a particular OS to be summarized together in a platform-specific database.

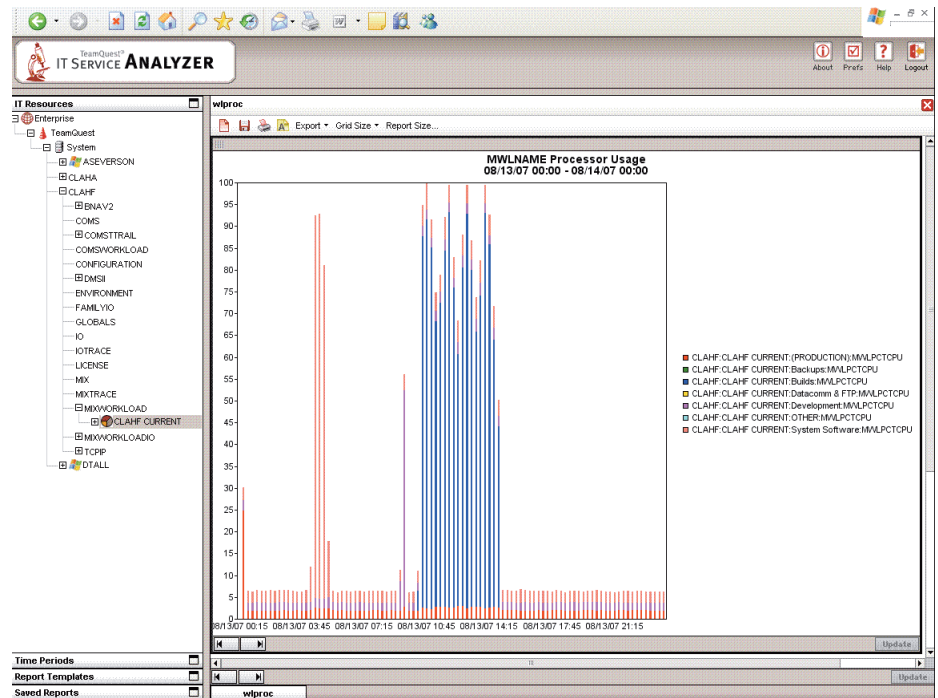
An enterprise database is also useful for efficiently analyzing performance across multiple tiers, determining how an application is behaving across multiple servers, or quickly finding which system is receiving the most traffic. You may also want to summarize information such as the number of active users you have on different systems.

TeamQuest Harvest gives you the ability to combine performance data from multiple systems. This allows you to:

- Analyze performance of groups or tiers of servers
- Analyze the composite performance of a multi-tier application
- Generate multi-system performance reports
- Gain flexibilities in how you analyze performance
- Calculate new performance metrics based on existing metrics

The TeamQuest Unisys MCP Systems Software family includes: TeamQuest Model, TeamQuest SMFII, TeamQuest Probes, TeamQuest Extended NAP Probes, TeamQuest PMPlus, and TeamQuest Express.

TeamQuest Harvest lets you track the activity on your system based on a logical classification of the work being performed.



Data Harvest

TeamQuest Harvest extracts performance data gathered by TeamQuest SMFIL and TeamQuest Probes on Unisys MCP systems. TeamQuest SMFIL and TeamQuest Probes collect comprehensive statistics for real-time monitoring, historical analysis, problem diagnosis and trending. Please refer to their respective brochures for more information.

To harvest performance data from a Unisys MCP system:

- Determine the systems and the data you wish to have in your enterprise database.
- Create the enterprise database.
- Extract data from the desired monitored systems for storage in the enterprise database.

www.teamquest.com/unisys



Corporate Offices and Americas
 Phone 800-551-8326 or
 +1 641 357-2700
info@teamquest.com
www.teamquest.com

Europe, Middle East, Africa
 Phone +46 (0)31 80 95 00
emea@teamquest.com

United Kingdom
 Phone +44 (0)1562 881889
emea@teamquest.com

Contact TeamQuest

Asia Pacific
 Phone +61 3 9641 2288
asiapacific@teamquest.com